

2006
PHAETON



TIFFIN MOTORHOMES

WHEREVER YOU GO, WE GO.

2006 SPECIFICATIONS

TIFFIN

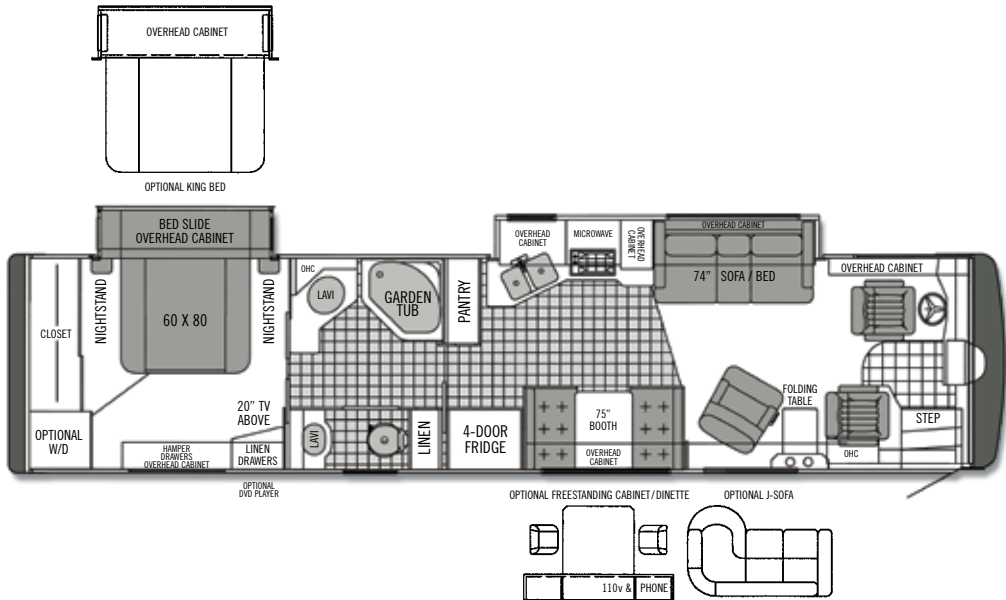
PHAETON

FLOOR PLANS

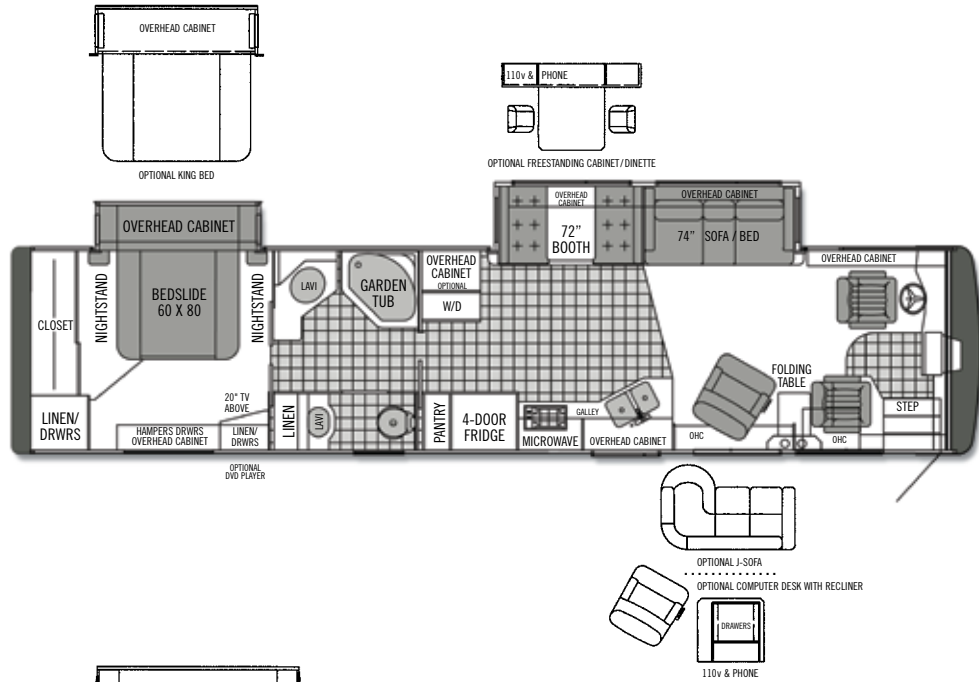
35 DH



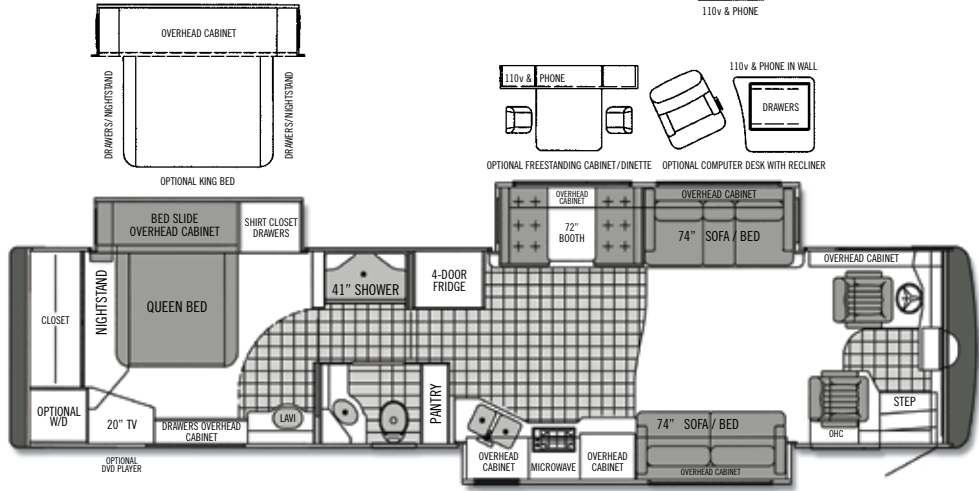
38 GH



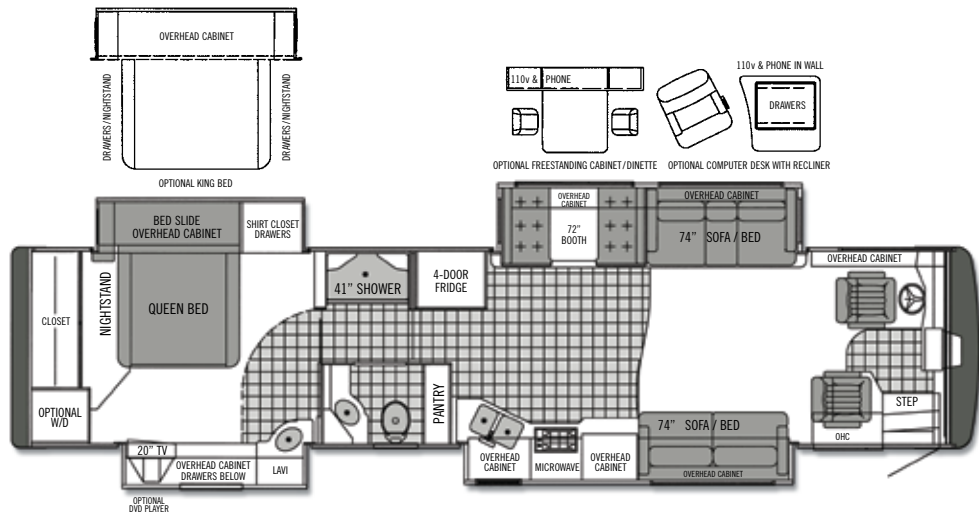
40 RH



40 TSH

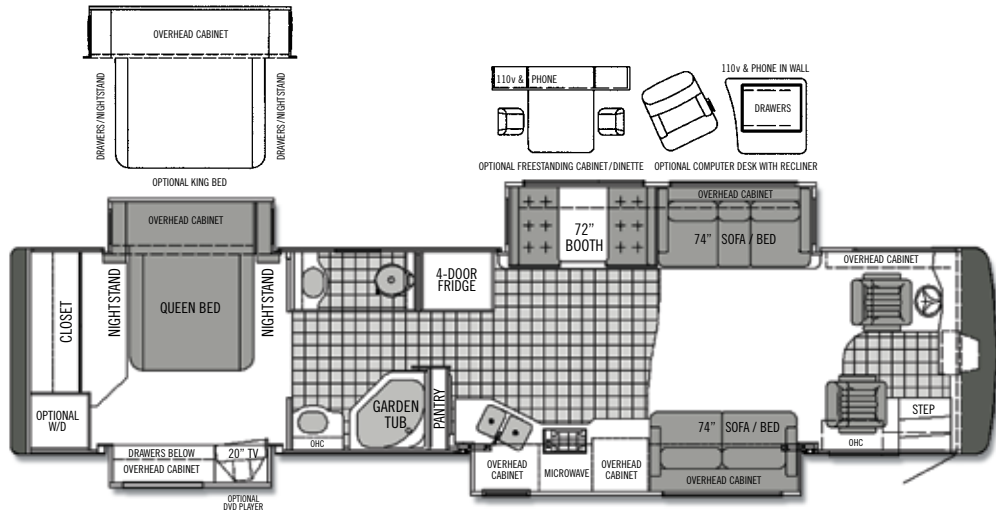


40 QDH



Additional floorplans may be available on our website: www.tiffinmotorhomes.com
 Aside from our unparalleled customer service, one of the things that Tiffin has been known for over the years is innovative floorplans.

40 QSH



TIFFIN
 PHAETON
 PAINT COLORS



FOREST ROSE Full Body



SUNLIT SAND Full Body



TITANIUM PEARL Full Body

Tiffin Motorhomes, Inc. 105 2nd Street NW Red Bay, AL 35582
 Call 256.356.8661 Fax 256.356.8219 www.tiffinmotorhomes.com
 For Parts and Service Call 256.356.0261

The following names are registered trademarks of Tiffin Motorhomes:
 Open Road®, Phaeton®, Allegro®, Allegro Bay®, Allegro Bus®, Zephyr®, Roughing It Smoothly®, and Pusher®.

TIFFIN

PHAETON

CABINETS
FABRICS
AND SPECS



Natural Maple



Cherry Bark



Oak



Carpet

BRONZE



Bedroom



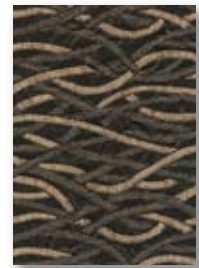
Bedroom Accent



Sofa/Chair



Living Area Accent



Dinette

SPA



Bedroom



Bedroom Accent



Sofa/Chair



Living Area Accent



Dinette

TUXEDO



Bedroom



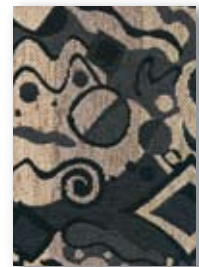
Bedroom Accent



Sofa/Chair



Living Area Accent



Dinette

Our fabric designs and choices of wood grain are sure to suit every taste. All cabinet finishes are available in combination with all fabric schemes.

AUTOMOTIVE

STANDARD EQUIPMENT ON ALL MODELS:

- Raised Rail Chassis Frame
- Allison 3000 MH Six-speed Automatic Transmission with Lock-up
- Atwood Electric Automatic Leveling Jacks
- Goodyear Tires
- Air Ride (4 Air Bags)
- Air Brakes with Automatic Slack Adjusters
- Emergency Start Switch
- 50" Wheel Cut
- ABS Brakes
- Cruise Control
- Exhaust Brake
- Caterpillar Engine 350 HP
- Adjustable Fuel and Brake Pedals

FREIGHTLINER CHASSIS	MODEL	35 DH	38 GH	40 RH	40 TSH	40 QDH	40 QSH
GVWR		32,000	32,000	32,000	32,000	32,000	32,000
GAWR – Front		12,000	12,000	12,000	12,000	12,000	12,000
GAWR – Rear		20,000	20,000	20,000	20,000	20,000	20,000
GCWR		42,000	42,000	42,000	42,000	42,000	42,000
Alternator Amps		160	160	160	160	160	160
Wheel Base		208	252	266	266	266	266
Tire Size		275/80R22.5	275/80R22.5	275/80R22.5	275/80R22.5	275/80R22.5	275/80R22.5
Trailer Hitch Capacity		10,000	10,000	10,000	10,000	10,000	10,000
Fuel Tank (Gallons) - Dual Fuel Fill		100	100	100	100	100	100
HWH Hydraulic Automatic Leveling Jacks		0	0	0	0	0	0

OVERALL	MODEL	35 DH	38 GH	40 RH	40 TSH	40 QDH	40 QSH
Overall Length – Approximately		35' 6"	38' 11"	40' 5"	40' 5"	40' 5"	40' 5"
Overall Height with Roof Air (Maximum)		12' 7"	12' 7"	12' 7"	12' 7"	12' 7"	12' 7"
Interior Height		84"	84"	84"	84"	84"	84"
Overall Width		101"	101"	101"	101"	101"	101"
Interior Width		96"	96"	96"	96"	96"	96"
Fresh Water (Gallons)		90	90	90	90	90	90
Black Water (Gallons)		45	45	45	45	45	45
Grey Water (Gallons)		70	70	70	70	70	70
LPG Tank (Gallons; can only be filled to 80% capacity)		35.7	35.7	35.7	35.7	35.7	35.7
Minimum Garage Height		13'	13'	13'	13'	13'	13'

STRUCTURAL

STANDARD EQUIPMENT ON ALL MODELS:

- Laminated Floor, Sidewall & Roof
- Steel / Aluminum Reinforced Structure

EXTERIOR

STANDARD EQUIPMENT ON ALL MODELS:

- Fiberglass Front & Rear Caps
- Dual Pane Windows
- Docking Lights
- Heated Water and Holding Tank Compartments
- Undercoating
- Domed Fiberglass Roof
- Dual Fuel Fills
- Exterior Patio Light
- TV Antenna
- Large Tinted One Piece Windshield
- Manual Door Awning
- 4 - 6v Auxiliary Batteries
- CB Antenna
- Fog Lights
- Automatic Patio Awning
- 2000 Watt Inverter with 100 Amp Converter & Transfer Switching + Four 6v Batteries
- Power Fantastic® Roof Vent with 3-speed Fan
- 7.5 Kw Onan Manual Slide-out Generator
- Slideout Awnings
- Park Telephone Ready
- 2 - 15,000 BTU Low Profile Roof A/C with Heat Pump
- Heated Power Mirrors with Remote Adjustment
- Wheel Liners
- Cable Ready TV
- A/C Condensation Drains
- Single Motor Intermittent Wiper
- Custom Mud Flap
- Black Tank Flush System
- Roof Ladder
- Gel-Coat Fiberglass Walls
- Exterior Swing-out Storage Doors
- 110v Exterior Receptacle
- Backup Camera and Color Monitor
- Full Body Paint
- with Gas Shocks
- 110v/12v Converter
- Water Filter
- Deadbolt Front Entrance Door
- Single Handle Lockable Storage Door Latches
- Lighted Exterior Storage
- Double Electric Step
- Lighted Exterior Storage

	MODEL	35 DH	38 GH	40 RH	40 TSH	40 QDH	40 QSH
Spotlight		0	0	0	0	0	0
Automatic Door Awning		0	0	0	0	0	0
Window Awning Package (Two Windows)		0	0	0	0	0	0
Aluminum Wheels		0	0	0	0	0	0
Exterior Slide-Out Storage Tray		0	0	0	0	0	0
Hadley Air Horns		0	0	0	0	0	0
In-Motion Satellite Dish		0	0	0	0	0	0
Semi-Automatic Satellite Dish		0	0	0	0	0	0
Automatic Satellite Dish		0	0	0	0	0	0
Cell Phone Antenna		0	0	0	0	0	0
24" TV On Slide/ Swivel Tray		0	NA	NA	0	0	0

DRIVER'S COMPARTMENT

STANDARD EQUIPMENT ON ALL MODELS:

- Flexsteel® Ultra Leather Power Driver and Passenger Seats with Foot Rest
- Dual Dash Fans
- 12v Dash Receptacle
- 24" Flat Screen Color TV
- Windshield Privacy Curtain
- Snack / Beverage Tray with Drawers
- Single CD Player AM/FM Stereo
- Fire Extinguisher
- Padded Dash
- Step Switch and 12v Disconnect Switch
- Sony® Back-Up Color Monitor
- Computer Slide-Out Tray

MODEL	35 DH	38 GH	40 RH	40 TSH	40 QDH	40 QSH
Sirius® Radio (Requires Subscription)	0	0	0	0	0	0
Power Sun Visors	0	0	0	0	0	0
Side Shades - Driver/Passenger Cockpit	0	0	0	0	0	0
Computer Navigational System	0	0	0	0	0	0
Chrome Mirrors	0	0	0	0	0	0
26" LCD TV	0	0	0	0	0	0

LIVING AREA/DINETTE

STANDARD EQUIPMENT ON ALL MODELS:

- Booth Dinette with Laminate Table Top and Solid Surface Edging

MODEL	35 DH	38 GH	40 RH	40 TSH	40 QDH	40 QSH
Free Standing Dinette with Built-in Cabinets	0	0	0	0	0	0
VCR	0	0	0	0	0	0

PASSENGER'S SIDE

MODEL	35 DH	38 GH	40 RH	40 TSH	40 QDH	40 QSH
Cloth Recliner (Flexsteel®) with Folding Table	S	S	S	NA	NA	NA
74" Ultra Leather DE Sofa Sleeper	NA	NA	NA	S	S	S
Ultra Leather Recliner (Flexsteel®) with Table	0	0	0	NA	NA	NA
Ultra Leather J-Lounge Sofa (Flexsteel®)	0	0	0	NA	NA	NA
Ultra Leather 62" Love Seat Sleeper	0	0	0	NA	NA	NA

DRIVER'S SIDE

MODEL	35 DH	38 GH	40 RH	40 TSH	40 QDH	40 QSH
Cloth DE Sofa Sleeper	S	S	S	S	S	S
Ultra Leather DE Sleeper Sofa	0	0	0	0	0	0
Ultra Leather Hide-a-Bed	0	NA	0	0	0	0
Cloth Magic Bed	0	0	0	0	0	0
Ultra Leather Magic Bed	0	0	0	0	0	0
Ultra Leather Recliner with Computer End Table	NA	NA	NA	0	0	0
Ultra Leather Euro Recliner with Computer End Table	NA	NA	NA	0	0	0

KITCHEN

STANDARD EQUIPMENT ON ALL MODELS:

- Solid Surface Counter Top with Stainless Steel Sink
- Single Lever Sink Faucet with Sprayer
- 4-Door Refrigerator with Ice Maker
- Solid Surface Sink and Stove Covers
- Convection / Microwave Oven

MODEL	35 DH	38 GH	40 RH	40 TSH	40 QDH	40 QSH
Convection / Microwave / Gas Oven	0	0	0	0	0	0
Expand-an-Island	NA	NA	NA	S	S	S

BATH

STANDARD EQUIPMENT ON ALL MODELS:

- Medicine Cabinet with Vanity Light
- Solid Surface Vanity Top & Bowl
- 3-Speed Fantastic® Fan
- Shower Door and Surround
- Skylight in Shower
- China Toilet

MODEL	35 DH	38 GH	40 RH	40 TSH	40 QDH	40 QSH
Fiberglass Molded Garden Tub	NA	S	S	NA	NA	S
Fiberglass Molded Shower	S	NA	NA	S	S	NA

BEDROOM

STANDARD EQUIPMENT ON ALL MODELS:

- Wardrobe
- Inner Spring Mattress
- 20" Color TV in Bedroom
- LPG Leak Detector
- Bed Comforter with Throw Pillows
- Night Stands
- Carbon Monoxide Detector
- Chest of Drawers with Laundry Hamper
- Under Bed Storage

	MODEL	35 DH	38 GH	40 RH	40 TSH	40 QDH	40 QSH
DVD Player		0	0	0	0	0	0
Pillow Top Mattress/Queen		0	0	0	0	0	0
Pillow Top Mattress/King		NA	0	0	0	0	0
Select Comfort (Dual Control) Bed System – Queen		0	0	0	0	0	0
Select Comfort (Dual Control) Bed System – King		NA	0	0	0	0	0

GENERAL INTERIOR

STANDARD EQUIPMENT ON ALL MODELS:

- 7' Ceilings
- Oak Cabinetry (Simulated)
- Fantastic® Power Roof Vents with 3 Speed Fans
- Soft Touch Vinyl Ceiling
- Day/Night Pleated Shades
- Tank Level Monitor System
- Armstrong® Plank Flooring in Kitchen, Bath & Entrance Landing
- 12 Volt Fluorescent Lights
- Smoke Detector
- Carpeting in Bedroom & Driver's Compartment with Scotchgard®
- Home Theatre Sound System with Concealed Speakers
- 10-Gal Gas/Electric Water Heater
- Raised Panel Hardwood Cabinet Doors
- Air Driven Step Well Cover

	MODEL	35 DH	38 GH	40 RH	40 TSH	40 QDH	40 QSH
Natural Maple Cabinetry (Simulated)		0	0	0	0	0	0
Cherry Bark Cabinetry (Simulated)		0	0	0	0	0	0
Ceramic Tile Flooring in Kitchen, Bath & Entrance Landing		0	0	0	0	0	0
Tile Aisle from Cockpit to Galley		0	0	0	0	0	0
Washer/Dryer		0	0	0	0	0	0
Central Vacuum Cleaner		0	0	0	0	0	0
One 42,000 BTU Ducted Furnace		S	NA	NA	NA	NA	NA
One 35,000 BTU Ducted Furnace & One 20,000 BTU Ducted Furnace		NA	S	NA	NA	NA	NA
One 42,000 BTU Ducted Furnace & One 20,000 BTU Ducted Furnace		NA	NA	S	NA	NA	NA
Two 30,000 BTU Ducted Furnaces		NA	NA	NA	S	S	S

All options may not be available in all models. Because of progressive improvements, specifications, standard and optional equipment are subject to change without notice or obligation.